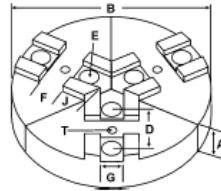


Square Serrated Key Type Soft Jaws, Round Jaws & Hard Jaws, Jaw Nuts, Masterkeys

ROUND JAWS - SQUARE SERRATED KEY TYPE

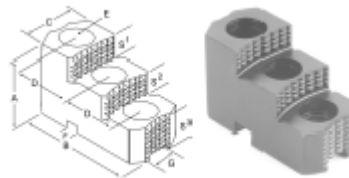
FOR USE ON: S.P, PRATT BURNED, WARNER & SWASEY, & OTHER CHUCKS



| Group # | Chuck Size | Tap Hole T | Key to Front J | CRITICAL DIMENSIONS | | | | Pie Dia B | Hght Inch A | ALUMINUM | CAST IRON | STEEL | |
|---------------|------------|------------|----------------|---------------------|-------------|--------------|--------------|-----------|---------------|---------------|-------------|------------|---|
| | | | | Groove Width G | Key Width F | Screw Size E | Hole Space D | | | Part # | Part # | Part # | |
| SI-07-5/16-16 | 6 | NONE | 1.40 | 0.738 | 0.377 | 5/16 | 1.688 | 6 | 2.00 | RSP-6200A* | RSP-6200CI* | - | |
| 4.00 | | | | | | | | | RSP-6400A* | RSP-6400CI* | - | | |
| 8 | | | | | | | | | 8-RSP-6200A* | - | - | | |
| SI-05-3/8-14 | 8 | 1/4-20 | 2.00 | 0.501 | 0.745 | 3/8 | 1.438 | 8 | 2.00 | RSP-8200A | RSP-8200CI | - | |
| 4.00 | | | | | | | | | RSP-8400A | RSP-8400CI | - | | |
| 12 | | | | | | | | | 12-RSP-8200A* | - | - | | |
| SI-06-1/2-12 | 8 | 10-32 | 2.00 | 0.670 | 0.601 | 1/2 | 1.250 | 8 | 2.00 | - | RSP-8202CI | - | |
| SI-07-1/2-14 | 8 | 1/4-20 | 2.00 | 0.751 | 0.745 | 1/2 | 1.438 | 8 | 2.00 | RSP-8205A | RSP-8205CI | - | |
| | | | | | | | | | 4.00 | RSP-8405A | RSP-8405CI | - | |
| SI-07-1/2-17 | 10 to 12 | 5/16-18 | 2.50 | 0.751 | 0.994 | 1/2 | 1.750 | 10 | 2.00 | RSP-10200A | RSP-10200CI | RSP-10200S | |
| | | | | | | | | | 4.00 | RSP-10400A | RSP-10400CI | - | |
| | | | | | | | | | 2.00 | RSP-12200A | RSP-12255CI | - | |
| | | | | | | | | | 4.00 | RSP-12400A | - | - | |
| SI-07-5/8-17 | 10 to 12 | 5/16-18 | 3.75 | 0.751 | 0.994 | 5/8 | 1.750 | 12 | 2.00 | RSP-12205A | RSP-12205CI | - | |
| | | | | | | | | | 4.00 | RSP-12405A | - | - | |
| | | | | | | | | | 15 | 15-RSP-12405A | - | - | |
| SI-10-3/4-25 | 15 to 18 | 3/8-16 | 4.00 | 1.001 | 1.488 | 3/4 | 2.500 | 12 | 2.00 | 12-RSP-15200A | - | - | |
| | | | | | | | | | 15 | 2.50 | RSP-15250A | - | - |
| | | | | | | | | | 4.00 | RSP-15400A | - | - | |

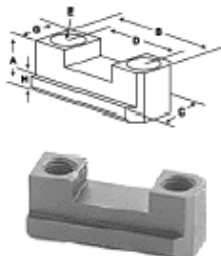
Round Jaw Material: ALUMINUM-6061-T6 Bar Stock, CAST IRON-Gray, STEEL-1018. 18" & Larger - Aluminum Casting T6. *denotes non-stock item. Please allow 1 week manufacturing time.

HARD JAWS



| Group # | Chuck Size | CRITICAL DIMENSIONS | | | | Hght Inch A | Length Inch B | Width Inch C | # of Steps | Step Height S1 | Step Height S2 | Step Height S3 | Hard Jaw Part # |
|--------------|------------|---------------------|-------------|--------------|--------------|-------------|---------------|--------------|------------|----------------|----------------|----------------|-----------------|
| | | Groove Width G | Key Width F | Screw Size E | Hole Space D | | | | | | | | |
| SI-07-1/2-17 | 12 | 0.750 | 0.996 | 1/2 | 1.750 | 2.50 | 3.780 | 1.750 | 2 | 0.630 | .620 | 1.250 | SP-120HJ2 |
| SI-07-5/8-17 | 10-12 | 0.750 | 0.996 | 5/8 | 1.750 | 2.50 | 3.780 | 1.750 | 2 | 0.630 | .620 | 1.250 | SP-125HJ2 |
| SI-10-3/4-25 | 15 | 1.000 | 1.488 | 3/4 | 2.500 | 3.000 | 4.750 | 2.250 | 2 | 0.750 | .750 | 1.500 | SP-150HJ2 |

JAW NUTS



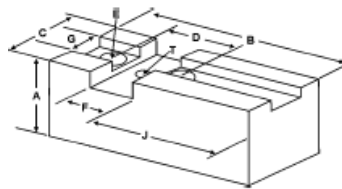
| Chuck Size | CRITICAL DIMENSIONS | | | | | | Width Inch C | Lgth Inch B | 2 Screws Included with Each Jaw Nut | |
|------------|---------------------|----------------|--------------|--------------|-------------|----------------|--------------|-------------|-------------------------------------|-------|
| | Heel Height H | Groove Width G | Screw Size E | Hole Space D | Hght Inch A | Jaw Nut Part # | | | Screw Part # | |
| | 8 | 0.375 | 0.498 | 3/8-16 | 1.438 | 0.995 | | | 0.875 | 2.125 |
| 8 | 0.375 | 0.748 | 1/2-13 | 1.438 | 0.995 | 0.993 | 2.125 | SP-85JN | S1/213150 | |
| 10 - 12 | 0.375 | 0.748 | 1/2-13 | 1.750 | 1.000 | 1.000 | 2.438 | SP-100JN | S1/213150 | |
| 10 - 12 | 0.375 | 0.748 | 5/8-11 | 1.750 | 1.000 | 1.000 | 2.500 | SP-125JN | S5/811150 | |
| 15 - 18 | 0.438 | 1.000 | 3/4-10 | 2.500 | 1.250 | 1.250 | 3.750 | SP-155JN | S1/410175 | |
| 20 - 24 | 0.438 | 1.000 | 3/4-10 | 3.000 | 1.250 | 1.250 | 4.500 | SP-215JN | S1/410175 | |



Square Serrated Key Type
Soft Jaws, Round Jaws & Hard Jaws, Jaw Nuts, Masterkeys

SOFT JAWS - SQUARE SERRATED KEY TYPE

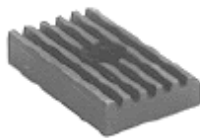
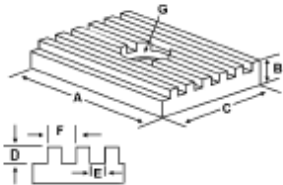
FOR USE ON: S.P, PRATT BURNED, WARNER & SWASEY, & OTHER CHUCKS



| Group # | Chuck Size | Tap Hole T | Key to Front J | CRITICAL DIMENSIONS | | | | Width Inch C | Length Inch B | Hght Inch A | ALUMINUM | STEEL | | | | | |
|---------------|------------|------------|----------------|---------------------|-------------|--------------|--------------|--------------|---------------|-------------|-----------------|-----------------|------|------|------|-------------|-----------|
| | | | | Groove Width G | Key Width F | Screw Size E | Hole Space D | | | | FLAT END Part # | FLAT END Part # | | | | | |
| SI-05-3/8-14 | 8 | 1/4-20 | 1.250 | 0.501 | 0.745 | 3/8 | 1.438 | 1.25 | 3.00 | 2.00 | SP-8200F | SP-8200F | | | | | |
| | | | | | | | | | | 3.00 | SP-8300F | SP-8300F | | | | | |
| SI-06-1/2-12 | 8 | 10-32 | 2.00 | 0.670 | 0.601 | 1/2 | 1.250 | 1.50 | 3.75 | 2.00 | SP-8202AF | SP-8202F | | | | | |
| | | | | | | | | | | 3.00 | SP-8302AF | SP-8302F | | | | | |
| SI-07-5/16-16 | 6 | NONE | 1.500 | 0.738 | 0.377 | 5/16 | 1.688 | 1.00 | 3.00 | 1.50 | SP-6150AF | SP-6150F | | | | | |
| | | | | | | | | | | 2.00 | SP-6200AF | SP-6200F | | | | | |
| | | | | | | | | | | 2.50 | SP-6250AF | SP-6250F | | | | | |
| | | | | | | | | | | 4.00 | SP-6400AF | SP-6400F | | | | | |
| SI-07-1/2-14 | 8 | 1/4-20 | 1.875 | 0.751 | 0.745 | 1/2 | 1.438 | 1.50 | 3.5 | 2.00 | SP-8205AF | SP-8205F | | | | | |
| | | | | | | | | | 3.00 | SP-8305AF | SP-8305F | | | | | | |
| | | | | | | | | | 3.375 | 4.00 | SP-8405AF* | SP-8405F* | | | | | |
| SI-07-1/2-17 | 10 to 12 | 5/16-18 | 1.625 | 0.751 | 0.994 | 1/2 | 1.750 | 1.75 | 4.00 | 2.50 | SP-10250AF | SP-10250F | | | | | |
| | | | | | | | | | | 4.00 | SP-10400AF | SP-10400F | | | | | |
| | | | 2.750 | 0.751 | .994 | 1/2 | 1.750 | 1.75 | 4.75 | 2.50 | SP-12250AF | SP-12250F | | | | | |
| | | | | | | | | | | 4.00 | SP-10400AF | SP-12400F | | | | | |
| SI-07-5/8-17 | 10 to 12 | 5/16-18 | 2.000 | 0.751 | .994 | 5/8 | 1.750 | 1.75 | 5.50 | 2.50 | SP-12256AF | SP-12256F | | | | | |
| | | | 2.500 | | | | | | | 2.50 | SP-12257AF | SP-12257F | | | | | |
| | | | 2.750 | 0.751 | .994 | 5/8 | 1.750 | 1.75 | 4.75 | 2.50 | SP-12255AF | SP-12255F | | | | | |
| | | | | | | | | | | 4.00 | SP-12405AF | SP-12405F | | | | | |
| SI-10-3/4-25 | 15 to 18 | 3/8-16 | 3.250 | 1.001 | 1.488 | 3/4 | 2.500 | 2.50 | 6.25 | 2.50 | SP-15250AF | SP-15250F | | | | | |
| | | | | | | | | | | 3.00 | SP-15300AF | SP-15300F | | | | | |
| | | | | | | | | 3.00 | 0.751 | .994 | 5/8 | 1.750 | 1.75 | 4.75 | 4.00 | SP-15400AF | SP-15400F |
| | | | | | | | | | | | | | | | 2.50 | SP-15403AF* | SP-15403F |
| SI-10-3/4-30 | 20 - 24 | 3/8-16 | 3.250 | 1.001 | 1.488 | 3/4 | 3.000 | 2.50 | 6.25 | 2.50 | SP-20250AF* | SP-20250F* | | | | | |
| | | | | | | | | | | 4.50 | SP-20400AF | SP-20400F | | | | | |

For "Pointed" Soft Jaws, please substitute "P" for "F" in the part number. Example: SP-8200AF will be SP-8200AP. For Pointed Jaws: Up to 10" add \$3.25, 12" and over add \$6.50. Soft Jaw Material: ALUMINUM-6061-T6 Bar Stock, STEEL-1018. "B" Jaws-7075-T6 Aircraft Aluminum. *denotes non-stock item. Please allow 1 week manufacturing time.

MASTER KEYS



| Chuck Size | CRITICAL DIMENSIONS | | | | Width Inch C | Hght Inch B | Length Inch A | Master Key Part # |
|------------|---------------------|---------|--------|---------|--------------|-------------|---------------|-------------------|
| | Screw Size | Pitch F | Slot E | Depth D | | | | |
| 8 | 1/4 | 0.200 | 0.098 | 0.101 | 0.744 | 0.375 | 1.313 | SP-80SQK |
| 8-SP | 1/4 | 0.155 | 0.075 | 0.101 | 0.744 | 0.435 | 1.406 | SP-8CCAK |
| 10 - 12 | 5/16 | 0.250 | 0.124 | 0.130 | .993 | 0.500 | 1.688 | SP-120SQK |
| 15 - 18 | 3/8 | 0.250 | 0.124 | 0.130 | 1.487 | 0.500 | 2.000 | SP-150SQK |
| 15 - 18 | 3/8 | 0.250 | 0.124 | 0.130 | 1.487 | 0.500 | 2.250 | SP-180SQK |
| 20 - 24 | 3/8 | 0.250 | 0.124 | 0.130 | 1.487 | 0.500 | 2.500 | SP-210SQK |